



# SOFT-ENGINE

## BANCO PROVA POTENZA

Visitate il nostro sito: [www.soft-engine.com](http://www.soft-engine.com)

**OFFICIAL SUPPLIERS OF:**  **SUZUKI ITALIA** 

**THE NEW DYNAMOMETERS MODELS!**

### THE COMPANY

**SOFT-ENGINE** is an Italian company for automotive engineering technology. Several years ago, Soft-Engine began the engine simulation software production, these are software for many automotive aspects, like silencers development, cams design or two-stroke and four-stroke horsepower simulation and others.

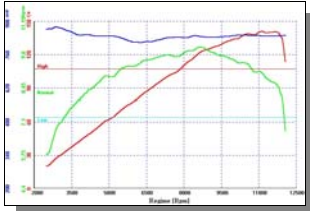
Thanks to automotive know-out, Soft-Engine now produces also dynamometers for motorcycles, engine and cars, accelerative and braked models.

**SOFT-ENGINE's** internal organisation consists of a staff of engineers who perfectly joins together the engine mechanics science and information technology demands. This is the why Soft-Engine's dynamometers are very hi-quality machines for your workshop.



### THE DYNAMOMETER

**SOFT-ENGINE DYNAMOMETERS** are very complete machines, they can test all kinds of motorcycles. Its structure is particularly strong, the software is very good in data acquiring, results analysis and it has a friendly interface. Soft-Engine's dynamometer allow all possible **accelerative and braked tests**, so you can use the dyno for **diagnosis**, mappings, you can study engine behaviour or make road simulations, if you do the "inertial & braker" combined test. All dynamometer accessories can be added in a second time, because Soft-Engine dynamometer is suitable to setting-up all optional parts, also the **eddy current brake**. In particular, we advise to you the **carburation data acquisition by lambda device**.



#### AN INTEGRATED AND COMPONIBLE DYNO:

The new Soft-Engine motorcycle dynamometer is made by a set drum-brake and by a footboard to sustain the motorcycle front wheel. The footboard can be removed, so the dyno can be put into a ground's hole.

#### New rear gate

It has a series of little holes, to place the exhaust gas evacuation manifold in any position, to have a more effective exhaust gas evacuation!



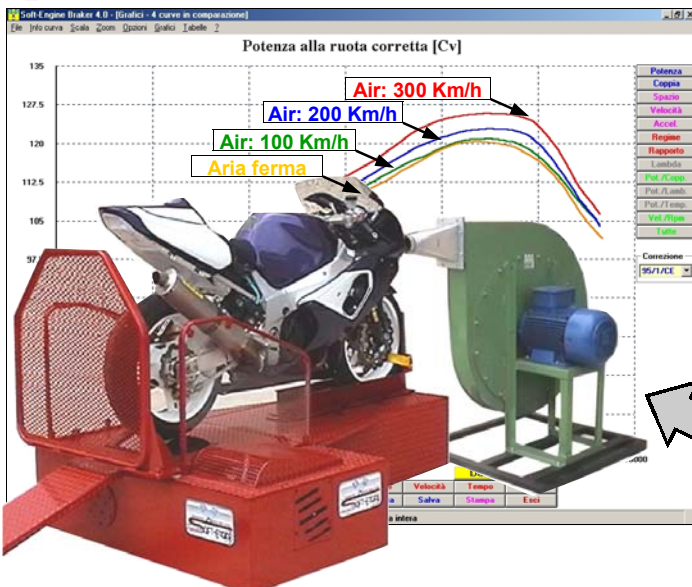
#### Eddy current brake box

It is included in the base version, it is easier to transform an accelerative dynamometer into a braked one!

#### Sheet

the mechanics is more sturdy, the visive impact is nice!

### "AIR BOX GP ONE"



**SOFT-ENGINE** presents the new **airbox** fan system, air speed variates together motorcycle speed **up to 350 Km/h**.

It is an accessory particularly demanded by tuners, because the horse-power diagram is more truthful, the road aero-dynamics conditions are simulated. Three versions: **Model A: 10 KW; Model B: 7.5 KW; Model GP: the max version!**

The best model is **AIRBOX GP ONE**, it allows a variable air speed from zero to 350 Km/h and manages the airbox over-pressure!!

## SOFT-ENGINE: DYNAMOMETERS

**Via del Consorzio, 2 60015 Falconara M.ma (AN) - ITALY**

**Ph: 0039-071-9156086 - Fax: 0039-071-9189118 E-mail: [info@soft-engine.com](mailto:info@soft-engine.com)**



# SOFT-ENGINE

## BANCHI PROVA POTENZA

Visitate il nostro sito: [www.soft-engine.com](http://www.soft-engine.com)

**OFFICIAL SUPPLIERS OF:**



### INERTIAL 100

**Accelerative dynamometer**, suitable to test motorbikes, scooter, mini-motorbike. The roller is very heavy, so the accelerative test is truthful. The rear safety gate is also a gas collector, a practical solution, a typical example of Italian style. This dynamometer is suitable to setting-up the eddy current brake for the braked test modality.

This **accelerative dynamometer** is the best arrangement for a machine workshop, because it can test all the possible 2-drive vehicle, from scooter to **superbike**. Axial fan to cool engine it's included in the basic dynamometer model. All the optional devices (Lambda sensor, Exhaust gas temperature, gas evacuation system, rpm direct acquisition and others) can be added in a second time. This dynamometer is suitable to setting-up the eddy current brake for the braked test modality.

### INERTIAL 150

**Braked dynamometer for motorcycles**. It is a very complete dyno, because you can make all the possible accelerative tests and all the braked tests also. So, you can **load** the engine, **mapping** the ignition system and you can stop the engine at imposed RPM. With the new test type called "**Inertial-braker**" you can make a **road simulation**. In-fact, you can accelerate like on the road but you can simulate a friction using the eddy current brake.

### BRAKER 150

### ACCESSORIES

All the accessories can be added to dynamometer base model in a second time also.

#### AUTOMATIC METEO DEVICE:

Environment data store, for DIN, SAE, CE 95/01 HP and Torque correction, included with our base dynos!

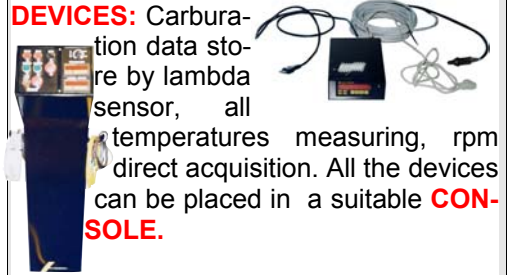


#### SERIAL ELECTRONIC:

Integrate electronic, it allows the real time and temperatures, pressures, lambda data store. Serial communication mode with PC.

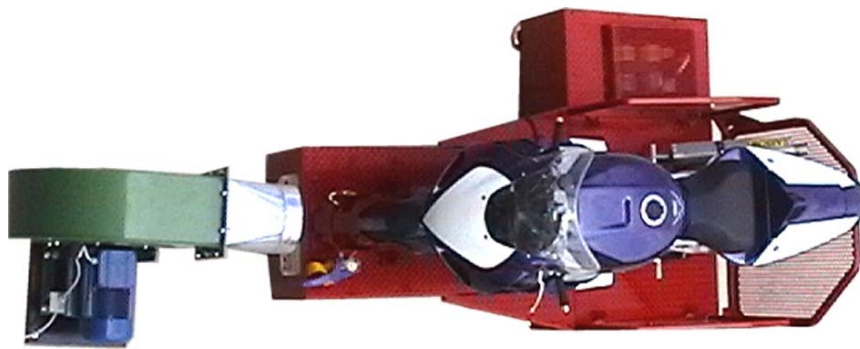
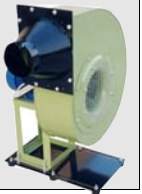


**DEVICES:** Carburation data store by lambda sensor, all temperatures measuring, rpm direct acquisition. All the devices can be placed in a suitable **CONSOLE**.



#### FAN SYSTEM

Complete fan system, with centrifugal fan; exhaust gas evacuation system, with manifold and pipes.



### INERTIAL 100

### INERTIAL 150

### BRAKER 150

INERTIAL 100	INERTIAL 150	BRAKER 150
Accelerative dynamometer	Accelerative dynamometer	Braked dynamometer
<ul style="list-style-type: none"> <li>Max horsepower: 150 HP</li> <li>Software Inertial 4.0</li> <li>Sizes: 2150x1410x420 mm</li> </ul>	<ul style="list-style-type: none"> <li>Max horsepower: 300 HP</li> <li>Software Inertial 4.0</li> <li>Sizes: 2150x1410x420 mm</li> </ul>	<ul style="list-style-type: none"> <li>Max horsepower: 300 HP</li> <li>Software Braker 4.0</li> <li>Sizes: 2150x1410x420 mm</li> </ul>
—	<ul style="list-style-type: none"> <li>Centrifugal fan to cool engine</li> </ul>	
<ul style="list-style-type: none"> <li>Disk brake to slow the drum.</li> </ul>		<ul style="list-style-type: none"> <li>Eddy current brake</li> </ul>

### THE SOFTWARE

The different versions of software measures: wheel and engine **Horse-power** and **Torque**, vehicle's performances as **Velocity**, **Acceleration** and **Displacement on the roller**; **Exhaust gas temperature**; **Instantaneous transmission ratio** (transmission lack evaluations); **Lambda sensor voltage**, with an hi-low carburetion indicator and **Traction force**. It's very simple to choose the test modality (accelerative or braked test): you click the correct icon on main window to chose the test, insert data and accelerate the vehicle on the roller. The others operations are completely automatic; at the end of test all the acquired quantities are displayed on the screen. All the acquired quantities are visualised as a diagram and as a chart of values: and both the kinds of visualisation are printable. Data analysis is complete, the option "Cursor" can read every diagram point by point!

## SOFT-ENGINE: DYNAMOMETERS

**Via del Consorzio, 2 60015 Falconara M.ma (AN) - ITALY**

**Ph: 0039-071-9156086 - Fax: 0039-071-9189118 E-mail: [info@soft-engine.com](mailto:info@soft-engine.com)**